

# PRESENTATIONS FOR WEST AREA PLANNING COMMITTEE - TUESDAY 7 JULY 2015

3. University Sportsground, Iffley Road: 15/01207/VAR (Pages 3 - 36)
  
4. 44 Union Street:15/01443/FUL (Pages 37 - 42)
  
5. Cuttleslowe Park, Harbord Road: 15/01197/FUL (Pages 43 - 52)



# Welcome to the West Area Planning Committee

- This planning committee meeting is held in public but it is not a public meeting.
- There will be an opportunity for the public to address the committee on each application.
- If you wish to speak for or against a planning application, you need to have either requested it in advance, or hand in one of the available speaker forms, or speak to the clerk.
- Information on meeting protocol and conduct at the committee is set out in the Code of Practice.
- This is in the committee agenda just before the first planning application report.





# Phasing Plan



30

MARSTON STREET

MARSTON STREET

MA





7



8





6

CLUB HOUSE  
WATERLOO ROAD, BURGESS

WATERLOO ROAD, BURGESS



10





PE05 UUB

N564 BKN

Xchanging  
PE06 CXT



**Delo**







16

SPOT

Food for Thinking  
The Centre for the University of Oxford  
www.campaign.ox.ac.uk/sport

10





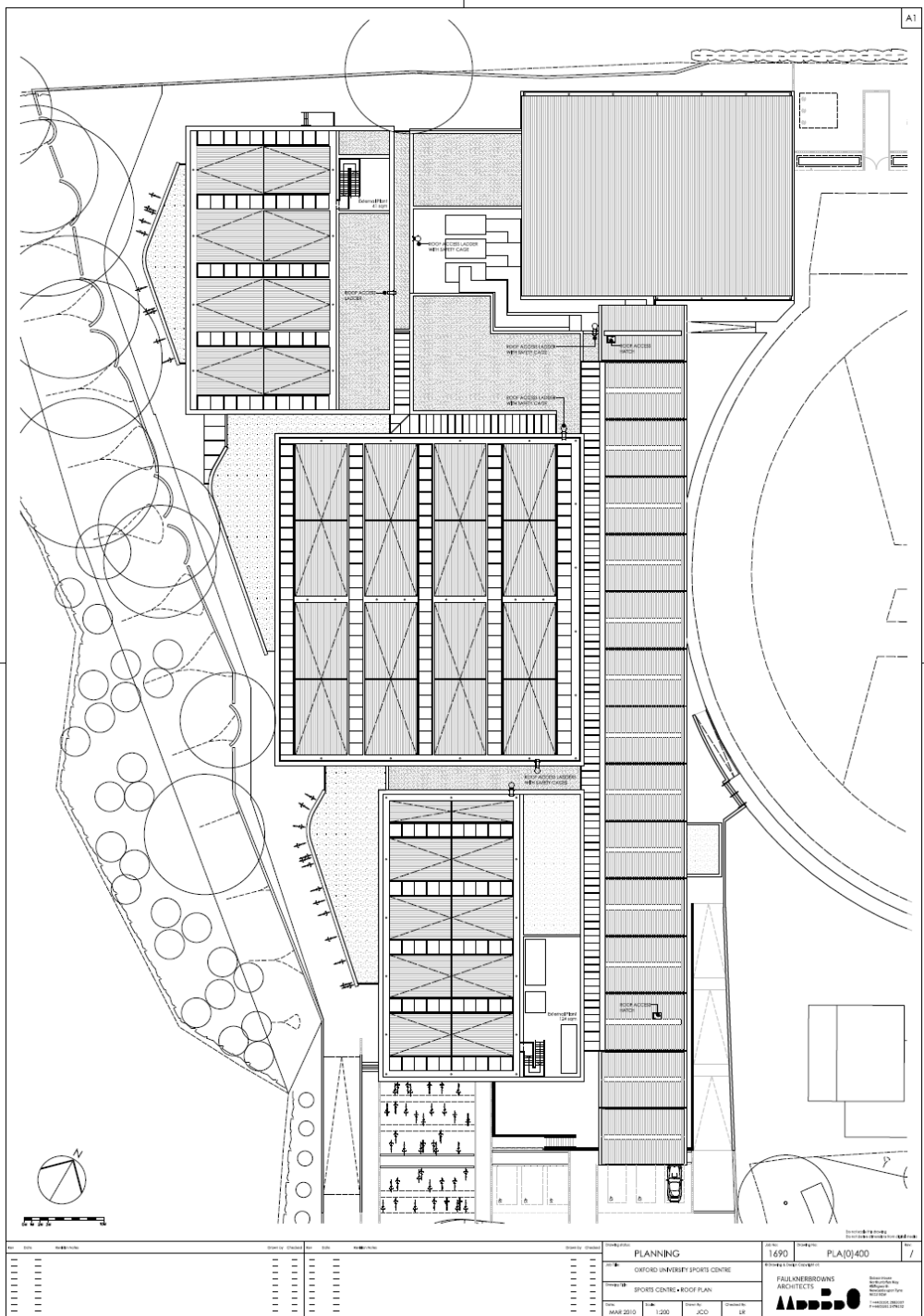


18









No. 1690-1691 Date: 16/03/2010 Scale: 1:200 Drawn: JCD Checked: LB		No. 1690-1691 Date: 16/03/2010 Scale: 1:200 Drawn: JCD Checked: LB		PROJECT TITLE <b>PLANNING</b> CLIENT OXFORD UNIVERSITY SPORTS CENTRE PROJECT NAME SPORTS CENTRE - ROOF PLAN DATE 16/03/2010 SCALE 1:200 DRAWN BY JCD CHECKED BY LB		DRAWING NO. <b>1690</b> SHEET NO. <b>PLA/D/400</b> TOTAL SHEETS <b>7</b> ARCHITECT <b>FALLNERBROWNS ARCHITECTS</b> 100, MARKET STREET, OXFORD, OX1 1DE, UK TEL: 01865 206000 FAX: 01865 206001 WWW: WWW.FALLNERBROWNS.COM	
--	--	--	--	---	--	--	--















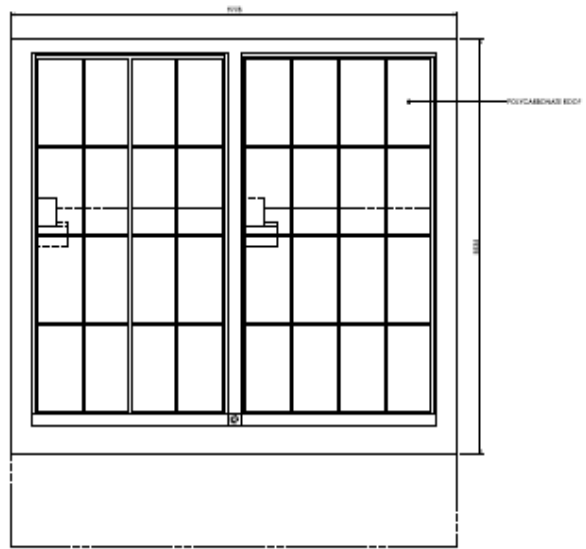




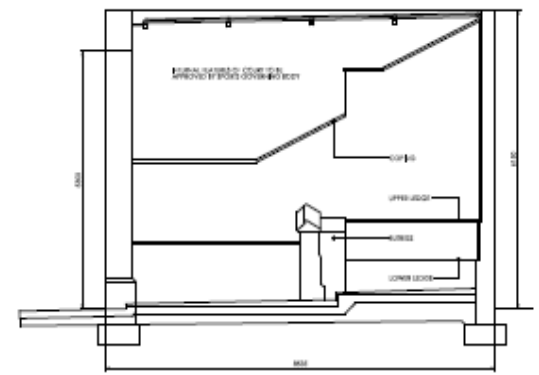
29

No.	Qty	Unit	Description	No.	Qty	Unit	Description	No.	Qty	Unit	Description	No.	Qty	Unit	Description
1				1				1				1			
2				2				2				2			
3				3				3				3			
4				4				4				4			
5				5				5				5			
6				6				6				6			
7				7				7				7			
8				8				8				8			
9				9				9				9			
10				10				10				10			
11				11				11				11			
12				12				12				12			
13				13				13				13			
14				14				14				14			
15				15				15				15			
16				16				16				16			
17				17				17				17			
18				18				18				18			
19				19				19				19			
20				20				20				20			
21				21				21				21			
22				22				22				22			
23				23				23				23			
24				24				24				24			
25				25				25				25			
26				26				26				26			
27				27				27				27			
28				28				28				28			
29				29				29				29			
30				30				30				30			
31				31				31				31			
32				32				32				32			
33				33				33				33			
34				34				34				34			
35				35				35				35			
36				36				36				36			
37				37				37				37			
38				38				38				38			
39				39				39				39			
40				40				40				40			
41				41				41				41			
42				42				42				42			
43				43				43				43			
44				44				44				44			
45				45				45				45			
46				46				46				46			
47				47				47				47			
48				48				48				48			
49				49				49				49			
50				50				50				50			

PLANNING		1690	P18 0 01	/
OXFORD UNIVERSITY SPORTS CENTRE				
GRANDSAND + RENDRELL				
MARKIS	WS	ECO	LE	
FALLOWSBROUWS ARCHITECTS		<small>OXFORD UNIVERSITY SPORTS CENTRE</small> <small>OXFORD UNIVERSITY ARCHITECTS</small> <small>OXFORD UNIVERSITY SPORTS CENTRE</small>		

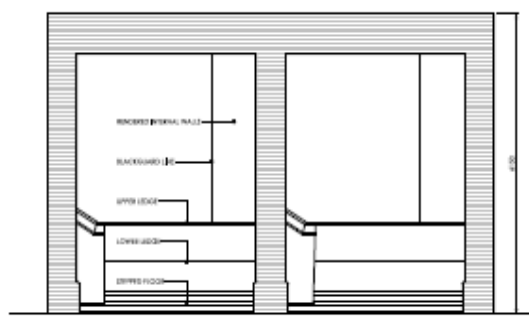


Roof Plan

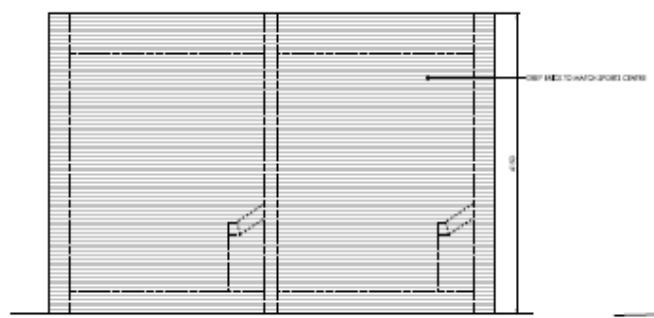


Section

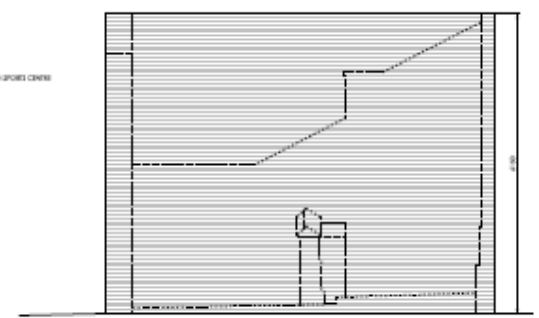
30



Front Elevation



Rear Elevation



Side Elevation

REV		DATE		BY		CHECKED		DATE		BY		CHECKED		DATE		BY		CHECKED			

REV		DATE		BY		CHECKED		DATE		BY		CHECKED		DATE		BY		CHECKED			

REV		DATE		BY		CHECKED		DATE		BY		CHECKED		DATE		BY		CHECKED			

REV		DATE		BY		CHECKED		DATE		BY		CHECKED		DATE		BY		CHECKED			

REV		DATE		BY		CHECKED		DATE		BY		CHECKED		DATE		BY		CHECKED			

REV		DATE		BY		CHECKED		DATE		BY		CHECKED		DATE		BY		CHECKED			

REV		DATE		BY		CHECKED		DATE		BY		CHECKED		DATE		BY		CHECKED			

REV		DATE		BY		CHECKED		DATE		BY		CHECKED		DATE		BY		CHECKED			

REV		DATE		BY		CHECKED		DATE		BY		CHECKED		DATE		BY		CHECKED			

REV		DATE		BY		CHECKED		DATE		BY		CHECKED		DATE		BY		CHECKED			

REV		DATE		BY		CHECKED		DATE		BY		CHECKED		DATE		BY		CHECKED			

REV		DATE		BY		CHECKED		DATE		BY		CHECKED		DATE		BY		CHECKED			

REV		DATE		BY		CHECKED		DATE		BY		CHECKED		DATE		BY		CHECKED			

REV		DATE		BY		CHECKED		DATE		BY		CHECKED		DATE		BY		CHECKED			

REV		DATE		BY		CHECKED		DATE		BY		CHECKED		DATE		BY		CHECKED			

REV		DATE		BY		CHECKED		DATE		BY		CHECKED		DATE		BY		CHECKED			

REV		DATE		BY		CHECKED		DATE		BY		CHECKED		DATE		BY		CHECKED			

REV		DATE		BY		CHECKED		DATE		BY		CHECKED		DATE		BY		CHECKED			

REV		DATE		BY		CHECKED		DATE		BY		CHECKED		DATE		BY		CHECKED			

REV		DATE		BY		CHECKED		DATE		BY		CHECKED		DATE		BY		CHECKED			

REV		DATE		BY		CHECKED		DATE		BY		CHECKED		DATE		BY		CHECKED			

REV		DATE		BY		CHECKED		DATE		BY		CHECKED		DATE		BY		CHECKED			

REV		DATE		BY		CHECKED		DATE		BY		CHECKED		DATE		BY		CHECKED			

REV		DATE		BY		CHECKED		DATE		BY		CHECKED		DATE		BY		CHECKED			

REV		DATE		BY		CHECKED		DATE		BY		CHECKED		DATE		BY		CHECKED			

REV		DATE		BY		CHECKED		DATE		BY		CHECKED		DATE		BY		CHECKED			

REV		DATE		BY		CHECKED		DATE		BY		CHECKED		DATE		BY		CHECKED			

REV		DATE		BY		CHECKED		DATE		BY		CHECKED		DATE		BY		CHECKED			

REV		DATE		BY		CHECKED		DATE		BY		CHECKED		DATE		BY		CHECKED			

REV		DATE		BY		CHECKED		DATE		BY		CHECKED		DATE		BY		CHECKED			

REV		DATE		BY		CHECKED		DATE		BY		CHECKED		DATE		BY		CHECKED			

REV		DATE		BY		CHECKED		DATE		BY		CHECKED		DATE		BY		CHECKED			

REV		DATE		BY		CHECKED		DATE		BY		CHECKED		DATE		BY		CHECKED			

REV		DATE		BY		CHECKED		DATE		BY		CHECKED		DATE		BY		CHECKED			

REV		DATE		BY		CHECKED		DATE		BY		CHECKED		DATE		BY		CHECKED			

REV		DATE		BY		CHECKED		DATE		BY		CHECKED		DATE		BY		CHECKED			

REV		DATE		BY		CHECKED		DATE		BY		CHECKED		DATE		BY		CHECKED			

REV		DATE		BY		CHECKED		DATE		BY		CHECKED		DATE		BY		CHECKED			

REV		DATE		BY		CHECKED		DATE		BY		CHECKED		DATE		BY		CHECKED			

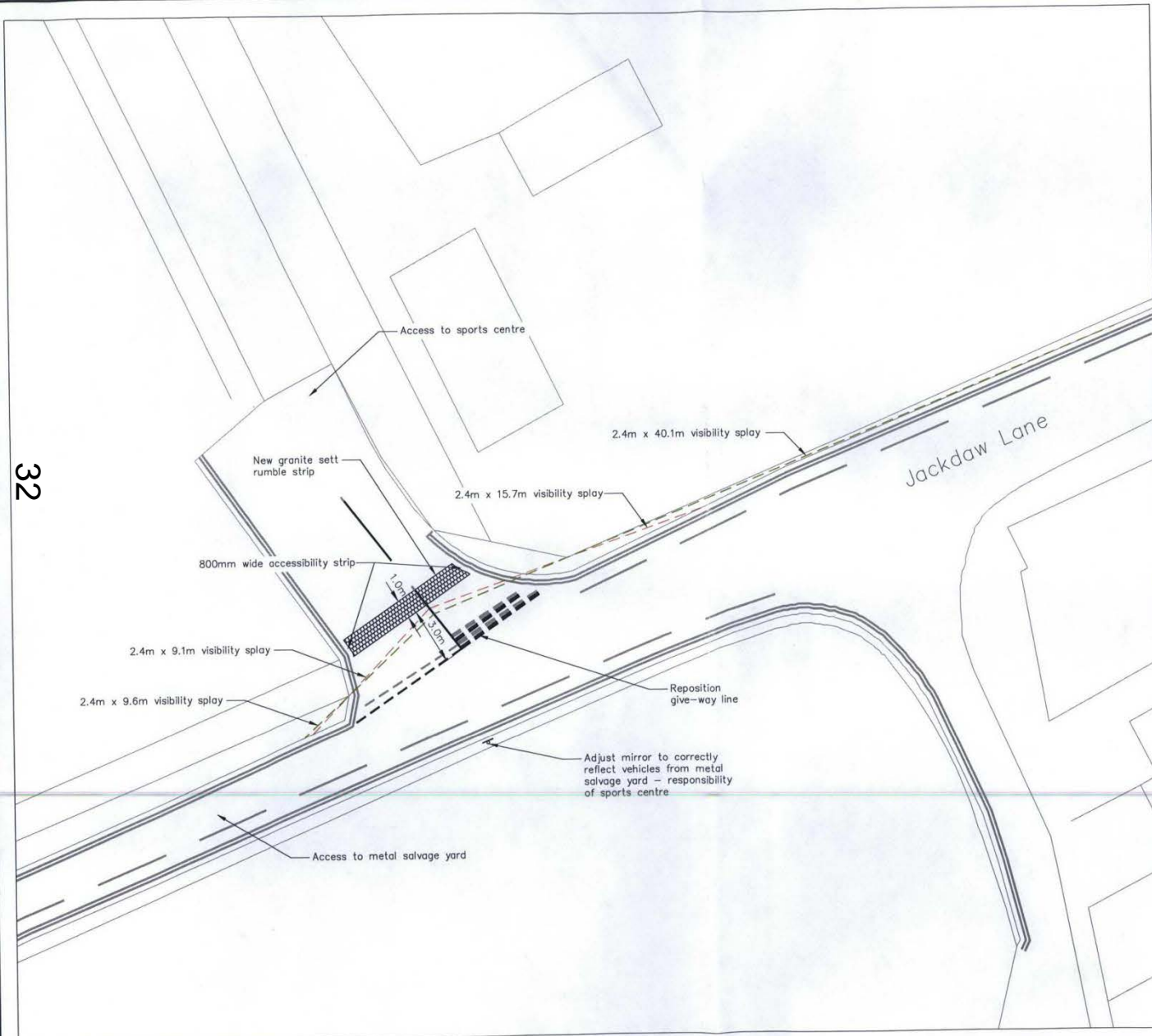
REV		DATE		BY		CHECKED		DATE		BY		CHECKED		DATE		BY		CHECKED			

REV		DATE		BY		CHECKED		DATE		BY		CHECKED	
-----	--	------	--	----	--	---------	--	------	--	----	--	---------	--



32



**Note:**  
 Reproduced from Ordnance Survey digital data with the permission of the Controller of Her Majesty's Stationery Office, Crown copyright (AL814229).



**KEY**

- Existing visibility splay
- - - Proposed visibility splay (in accordance with Manual for Streets)

Rev.	Description	Date	Chkd
A	Accessibility strip added. Mirror note amended.	01/07/10 J.BI	

**Glanville**  
 Cornerstone House  
 62 Foxhall Road, Dldcot  
 Oxon, OX11 7AD  
 Tel: (01235) 515550 Fax: (01235) 817799  
 postbox@glanvillegroup.com www.glanvillegroup.com

**Client:**  
 Oxford University Estates Directorate

**Project:**  
 Iffley Road Sports Centre

**Title:**  
 Proposed Improvements to  
 Site Access / Jackdaw Lane Junction

**Project Engineer:** M. Ford **Scale:** 1:200 @ A3  
**Project Director:** P. Hodgson **Date:** June 2010

**Status:** PRELIMINARY

Drawing No. TR290150/01	Rev A
-------------------------	-------











# Welcome to the West Area Planning Committee

- This planning committee meeting is held in public but it is not a public meeting.
- There will be an opportunity for the public to address the committee on each application.
- If you wish to speak for or against a planning application, you need to have either requested it in advance, or hand in one of the available speaker forms, or speak to the clerk.
- Information on meeting protocol and conduct at the committee is set out in the Code of Practice.
- This is in the committee agenda just before the first planning application report.





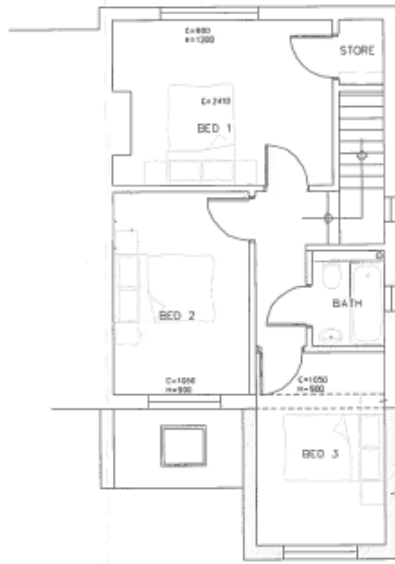
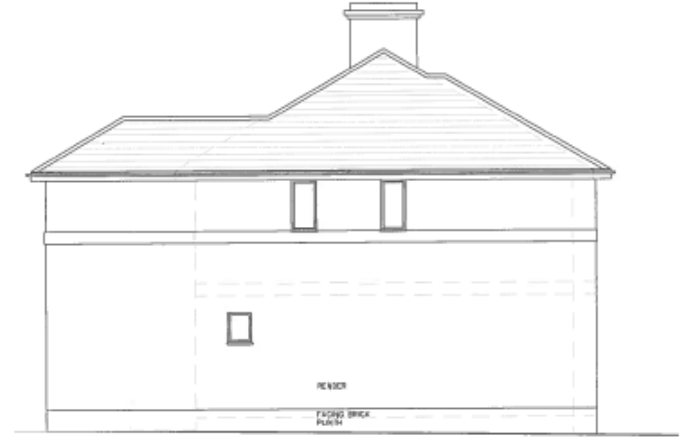


39

College and County  
**To Let**  
01865 722722  
collegeandcounty.co.uk

BG62 UDD

# Existing Plans and Elevations

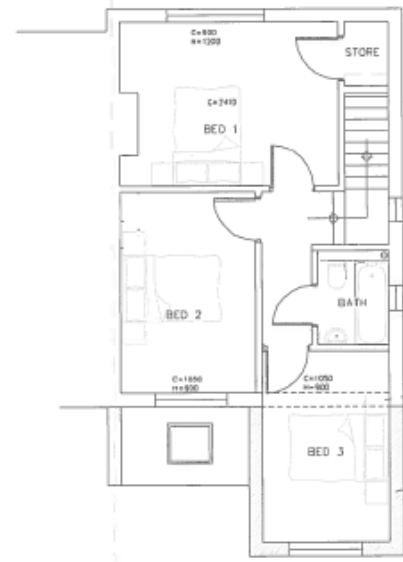
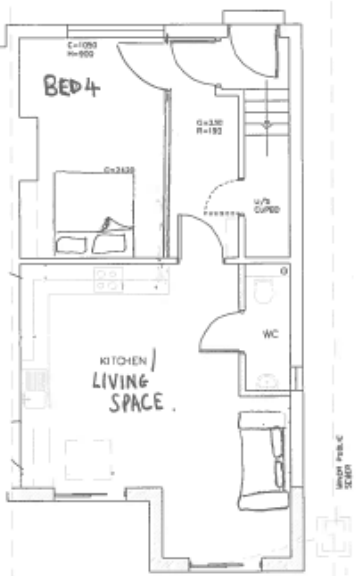
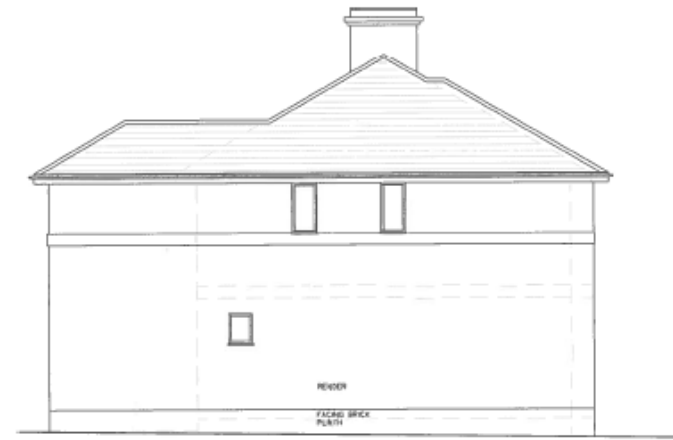


EXISTING PLANS AND ELEVATIONS  
1:100





# Proposed Plans and Elevations



ELEVATIONS/PLANS AS PROPOSED  
1:100



This page is intentionally left blank

# Welcome to the West Area Planning Committee

- This planning committee meeting is held in public but it is not a public meeting.
- There will be an opportunity for the public to address the committee on each application.
- If you wish to speak for or against a planning application, you need to have either requested it in advance, or hand in one of the available speaker forms, or speak to the clerk.
- Information on meeting protocol and conduct at the committee is set out in the Code of Practice.
- This is in the committee agenda just before the first planning application report.

43



CUTTESLOWE

Playground

Putting Green

Tennis

Bowling Green

Pavilion

Padding Pool

Issues

15

91

15

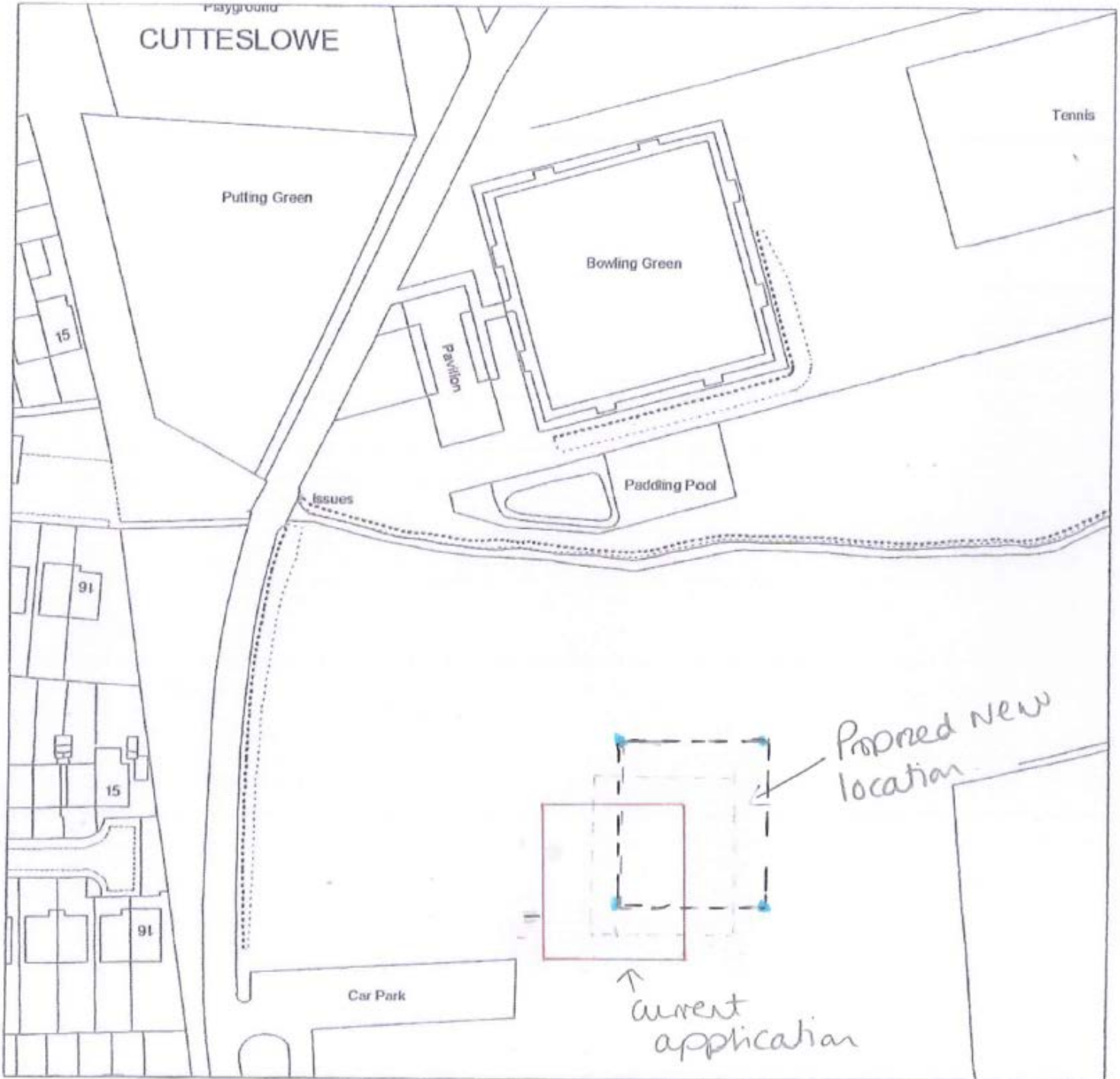
91

Car Park

Proposed new location

current application

44





45





46





47



48

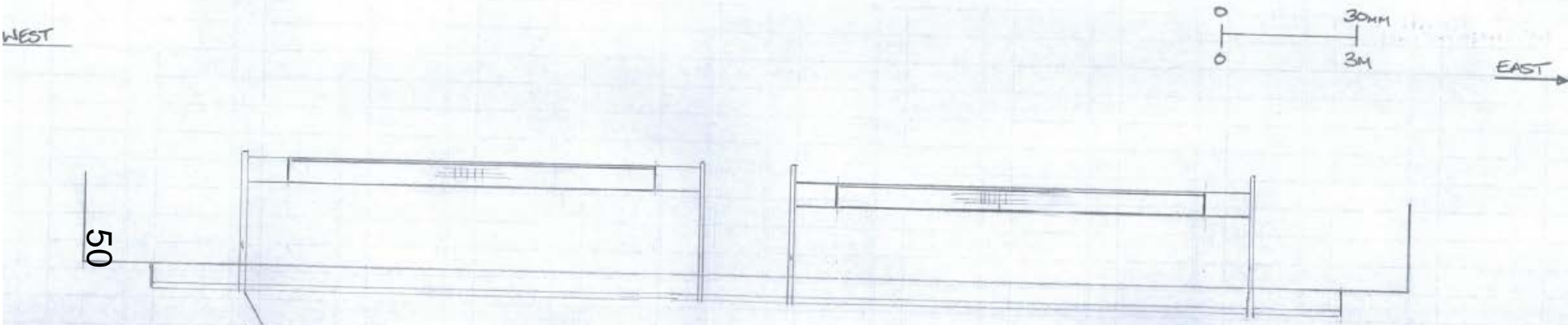






49

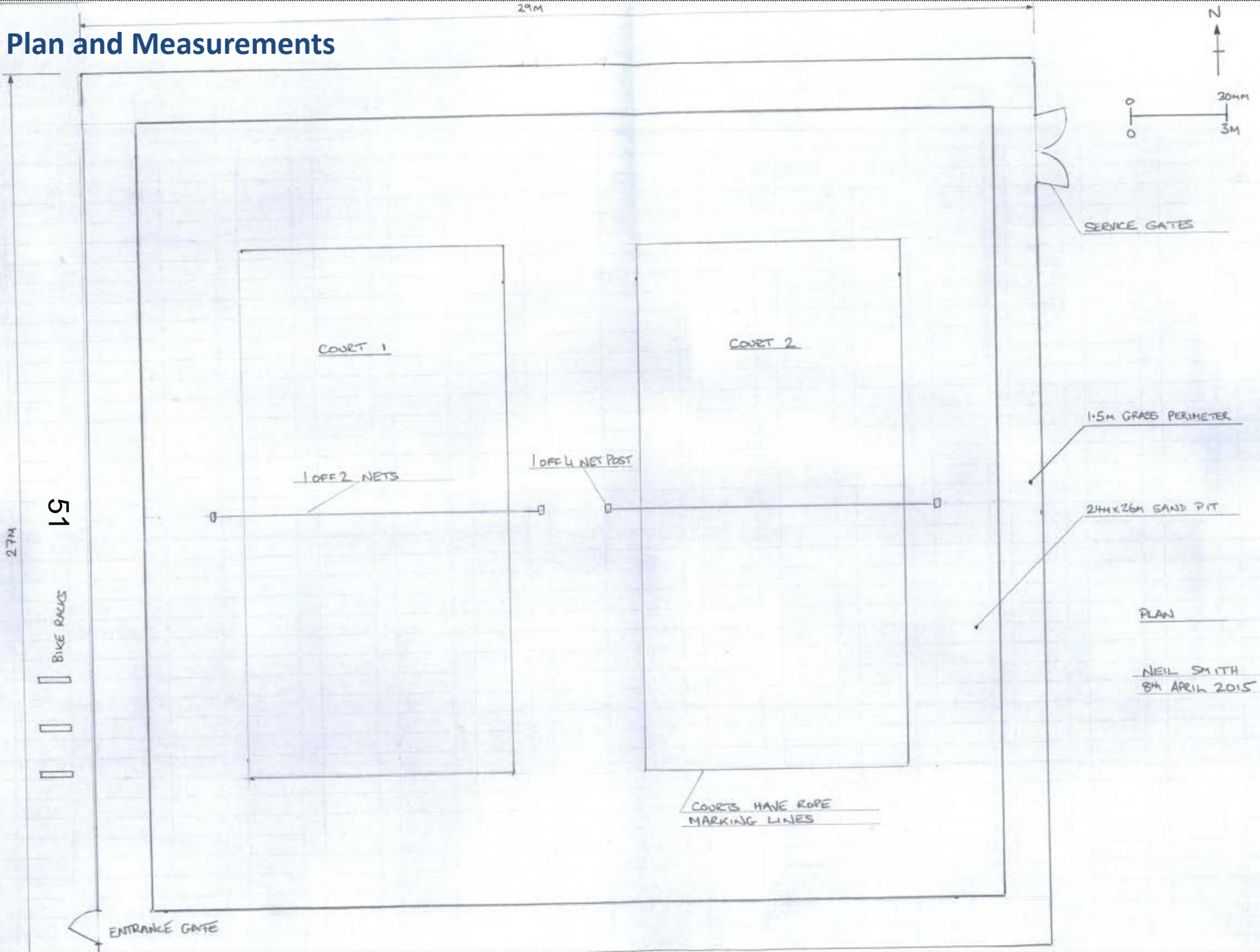
# East and West



THE POST HAVE A T PEICE  
ON THE BOTTOM THESE ARE  
BETWEEN THE GRAVEL AND SAND  
THE WEIGHT OF THE SAND HOLDS  
THE POST UP.

NEIL SMITH  
20 MARCH 2015

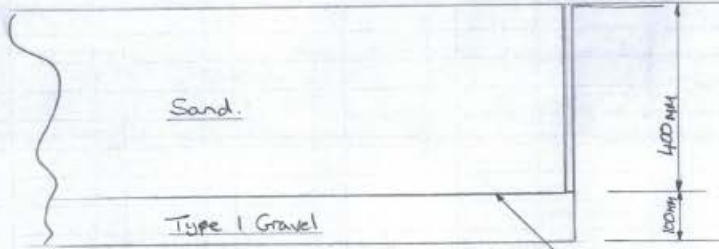
# Plan and Measurements



# Section of Sand Pit



52



MEMBRANE BETWEEN GRAVEL AND SAND,  
GROUSE UP THE BACK OF SHUTTERING AND UNDER GRASS.

SECTION OF SAND PIT  
WITH FENCE

NEIL SMITH  
8<sup>th</sup> MARCH 2015